



Model AW50 QUEEN *Installation Instructions*

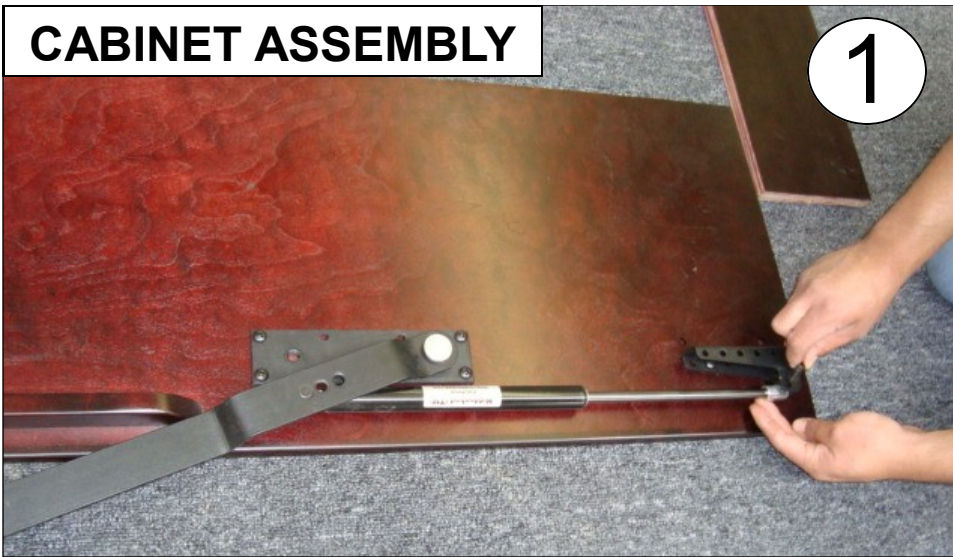
*Please keep these instructions for future reference.
Hiddenbed must be dis-assembled before moving.*

a product of WALLBEDS!

Hiddenbed  TM

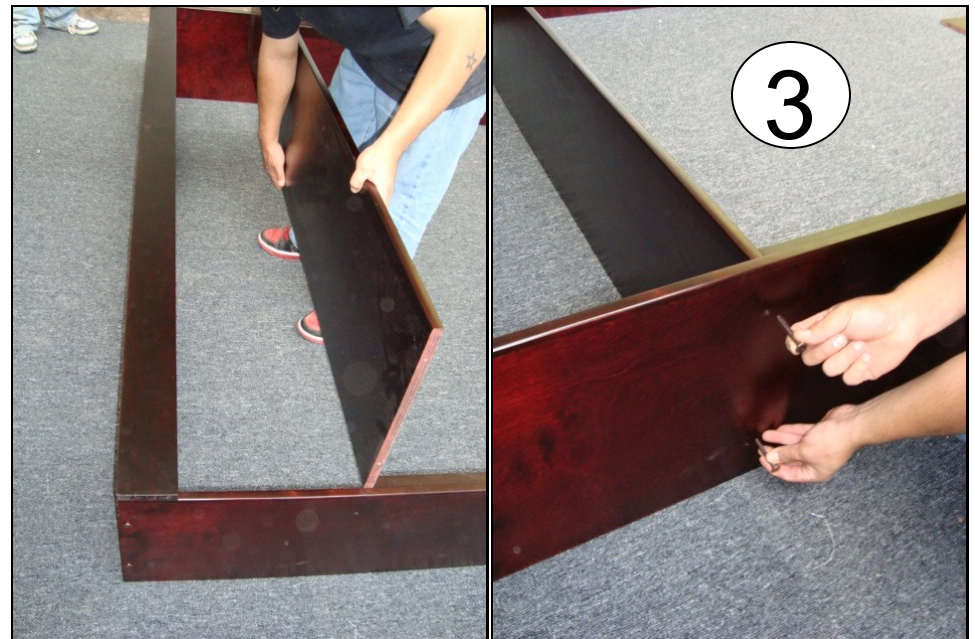
CABINET ASSEMBLY

1



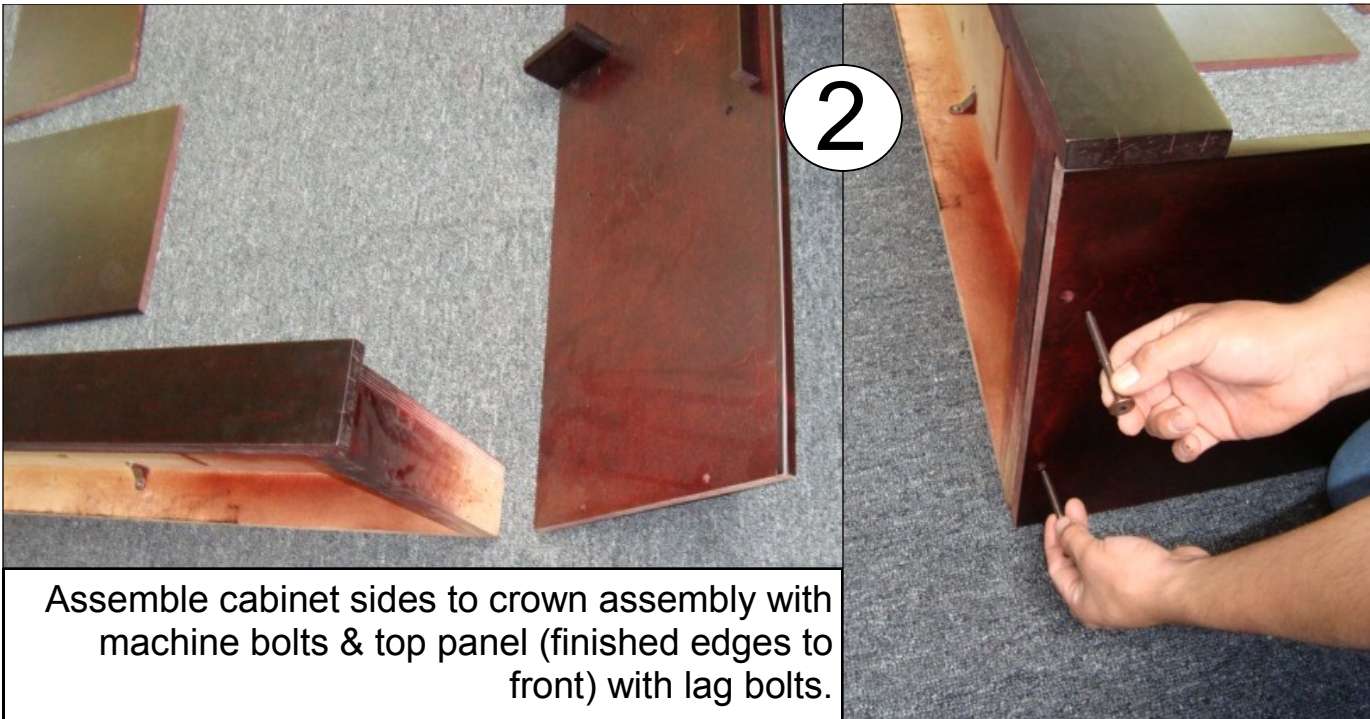
Set up lever arm assembly on side panels by cutting ties, rotating arm to the upper position and connecting loose end of piston to bracket at bottom of leg with cotter pin and key provided. Secure the cotter pin by bending ends.

3



Attach Hutch Shelf with Lag Bolts keeping finished edges to front.

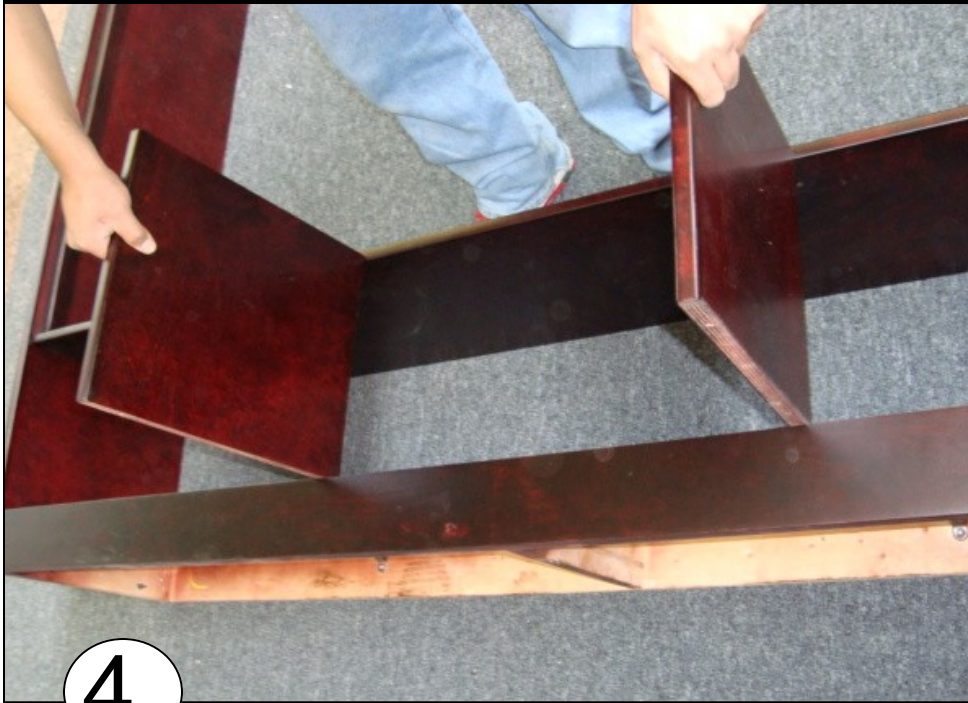
2



Assemble cabinet sides to crown assembly with machine bolts & top panel (finished edges to front) with lag bolts.



ADJUST THE CROWN POSITION



Assemble vertical partitions between crown and top panel, shelf holes towards sides, with lag bolts. Adjust the crown position so that the top panel is level and straight. The top panel alignment will be determined by the partitions fixed to the top crown.



Attach lower strong back between sides with lag bolts finished edge up.

6

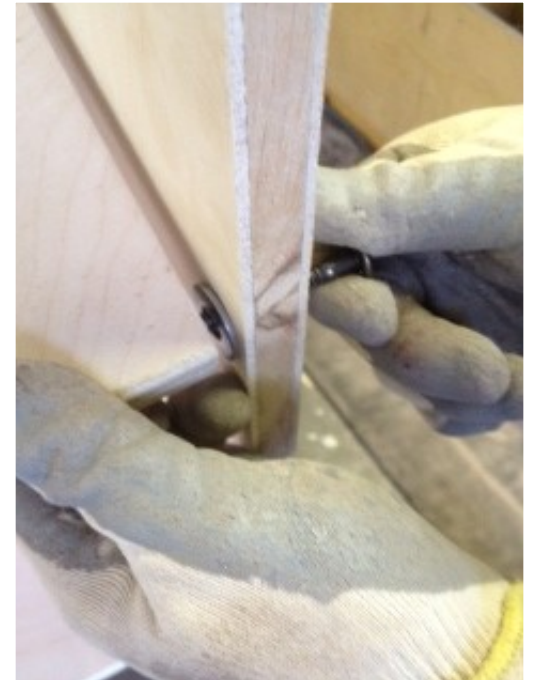
PILLOW BOX Headboard Assembly

Attach pillow box assembly to the cabinet towards the back using two comformat screws on each side between the cabinet sides. Shown



INSTALLING THE LID-

Using one comformat screw on each end of the lid with a washer placed between lid and the bed side as a spacer. The lid is purposely designed short to ensure that it does not rub on either side.



Pillow Box lid open



Pillow Box lid closed

MATTRESS TRAY ASSEMBLY



7

Stand assembled cabinet up in front of, but out away from the wall.

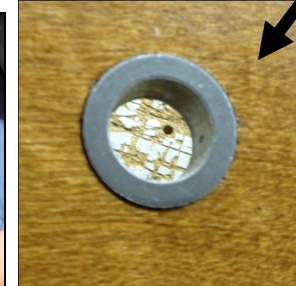


Place tray on floor finished face up.

8

9
Mount Tray Ends to Tray with Lag Bolts.

Caution: The tray ends are left and rights, so when installing, be sure each tray end is mounted to the tray with lag bolts so that the thicker lidded side of the bushing is facing towards the tray, not away. If installed correctly then these will be facing each other like this:



correct



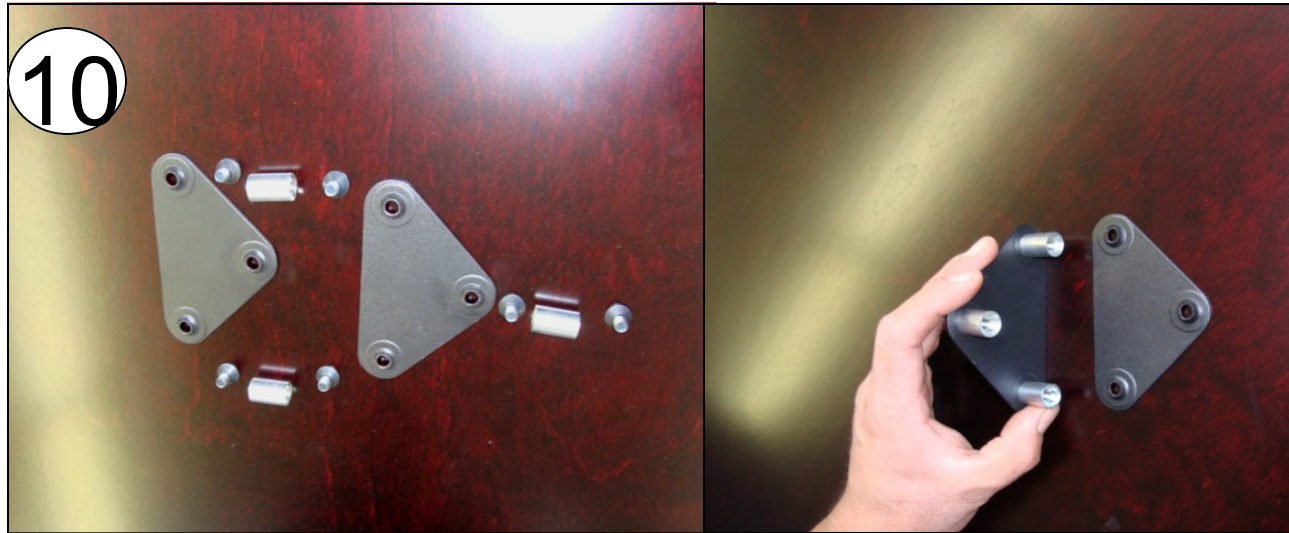
incorrect



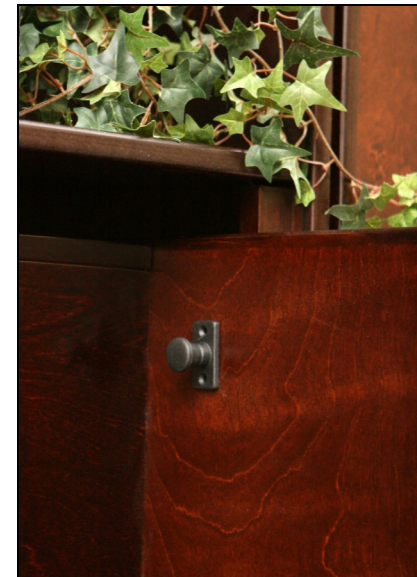
tray ends installed

DESK TRAY ASSEMBLY

Place desk tray vertically on mattress tray assembly and attach with triangle hinge plates, sleeves & bolts on both ends. Loosen assembled sleeve & bolts to plate, insert in holes, attach remaining bolts, then tighten all.



Attach Black locking assembly to the inside on the bed end panels in holes provided, using screw. Retract the pins for assembly clearance.



CONNECTING DESK TRAY TO MATTRESS TRAY

11



Attach bearer assembly (bolt, bearer through wood to T-nut, reversed so tangs point away from wood) to each end of the desk. Tighten firmly, but leave enough slack to slightly adjust the position later. **DO NOT** apply screws to the flange holes now.



Fold the desk down over the finished bottom of the mattress tray.

ATTACHING DESK/BED TRAY TO THE CABINET

13

Roll the entire assembly over so the desk bottom is on the floor and the mattress bed tray is facing up.



14



Slide the DESK/BED tray into the standing cabinet. Line up the trunion hole in the bed tray with the connecting threaded hole at the upper end on the lever arm bracket mounted to the side panel. From behind the unit, slide the trunion sleeve and bolt through the hole in the lever arm bracket. Once both trunions are in place, use the 10mm allen wrench to firmly tighten the trunion bolts.

MOUNT TO THE WALL

15 Using a studfinder, locate three wall studs to be attached to (one near the center of the bed, and one on each side). Draw a vertical pencil line that will appear above and below the top assembly. Move the Hiddenbed to the desired location and lift and lock the bed in the up position. (CAUTION-The unit is unstable and may try to fall over. DO NOT leave unattended in this position!) Push some folded cardboard between the cabinet sides and bed tray on each side to assure even spacing. Mark the wall at each upper corner of the cabinet, then cautiously unlock and lower the bed. Attach to the wall studs by driving 2 1/2" screws through the top assembly backrail, close to the top, at the stud points marked for alignment.

YOU MUST HIT STUDS, as sheetrock or paneling will not hold the bed up!

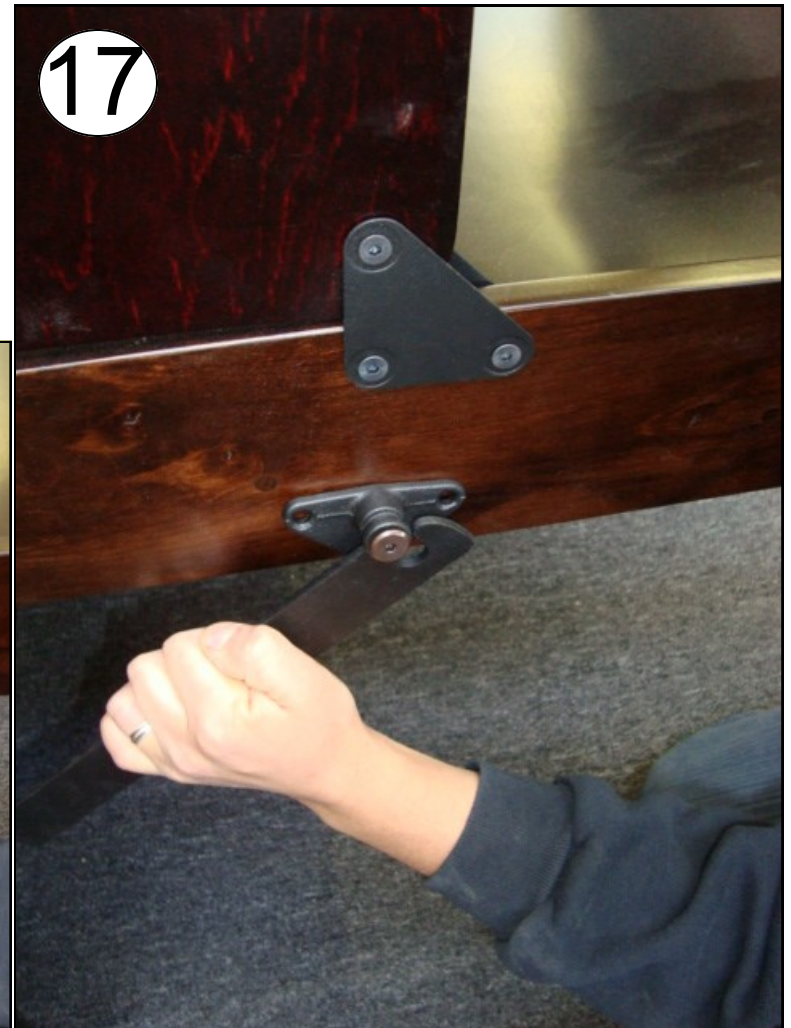


16 INSERT MATTRESS-Strap and buckle your mattress (10" thick or less) into the tray and tuck the excess strapping under one side.



CONNECTING THE LEVER ARM

Raise and LOCK the bed in the up position. Hold the desk wing and pull the lever arm down to the bearer, then release to connect gently with the bearer. Verify that the desk is sitting fully up to the side panel. If it is not, slightly loosen the bearer bolts allowing it to do so, then retighten securely. Then apply screws to each of the three flange holes of the bearer fittings on each end of the desk. One lever arm at a time may be released for screw access.



WARNING:

**NEVER TRY TO FOLD UP THE
DESK SURFACE AS YOU CAN
DAMAGE THE BED.**

USE TIPS

- This product is designed to hold mattresses up to 10" thick.
- Lift pistons should never be lubricated
- Movement will be affected by the weight on the work surface. A load limit of 50lbs is recommended.
- Although the bed will remain closed by itself under most loads, the locks should be used to assure a steady and safe work surface.
- Operation is done by releasing the locks and pulling down on the upper corner of the desk wing, NOT by pushing on the work surface.
- The work surface is not a safe seating area!
- The wood furniture is finished with a seven step stain and catalyzed lacquer process, providing excellent resistance to most fluids and abrasion. It is best cared for with a non-water or alcohol based polish applied with a soft cloth.



**Please keep these instructions for future reference.
Moving the fully assembled unit is NOT recommended.**

Hiddenbed ™

WALLBEDS! products of Westcott Designs **Made in the U.S.A.**

email: wallbedsinfo@yahoo.com 800-934-6711